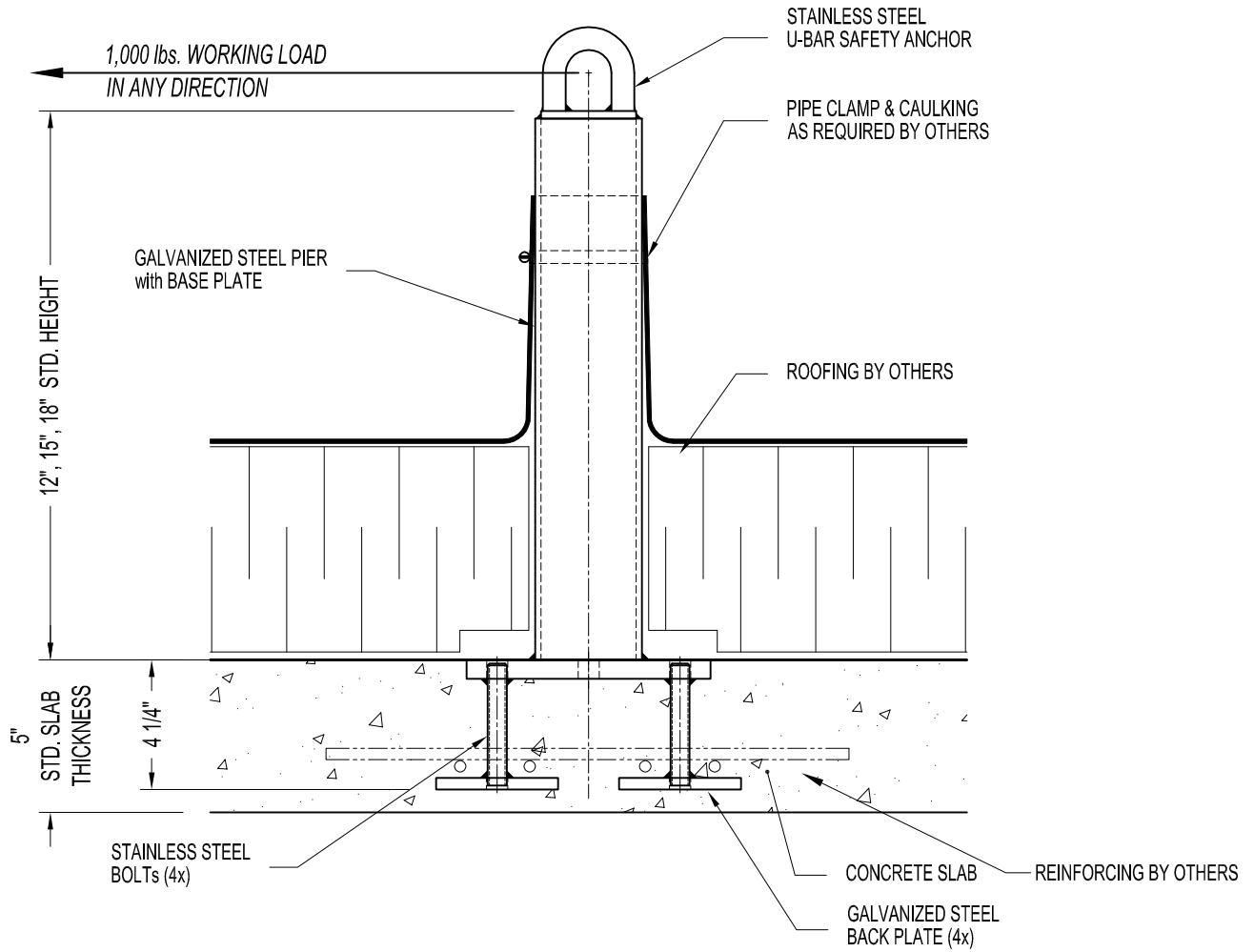


NOTES:

1. 1,000 lbs. WORKING LOAD IN ANY DIRECTION.
2. ASSEMBLY SHOWN IS 12", 15" & 18" HIGH MODELS FOR THIN SLAB THICKNESS OF 5".
3. MINIMUM CONCRETE SLAB THICKNESS TO BE 5".
4. ASSEMBLY SHOWN WITH CONVENTIONAL SINGLE PLY ROOFING (BY OTHERS) - NO FLASHING.

IMPORTANT:

1. THE SAFETY ANCHOR HAS BEEN DESIGNED TO ENSURE THAT FRACTURE OR DETACHMENT DOES NOT OCCUR WITH A 5,000 lbs. (22.2 KN) LOAD.
2. IT IS THE RESPONSIBILITY OF THE STRUCTURAL ENGINEER FOR THE OVERALL PROJECT TO ENSURE THAT THE STRUCTURE ON WHICH THE SAFETY EQUIPMENT BY PRO-BEL IS INSTALLED, IS REINFORCED TO WITHSTAND THE LOADS INDICATED ON THIS DRAWING.



MAX. LIMIT = 18"

PBE74-00A4: CAST IN PLACE ROOF ANCHOR (FOUR S.S. STUDS) - THIN SLAB < 6"