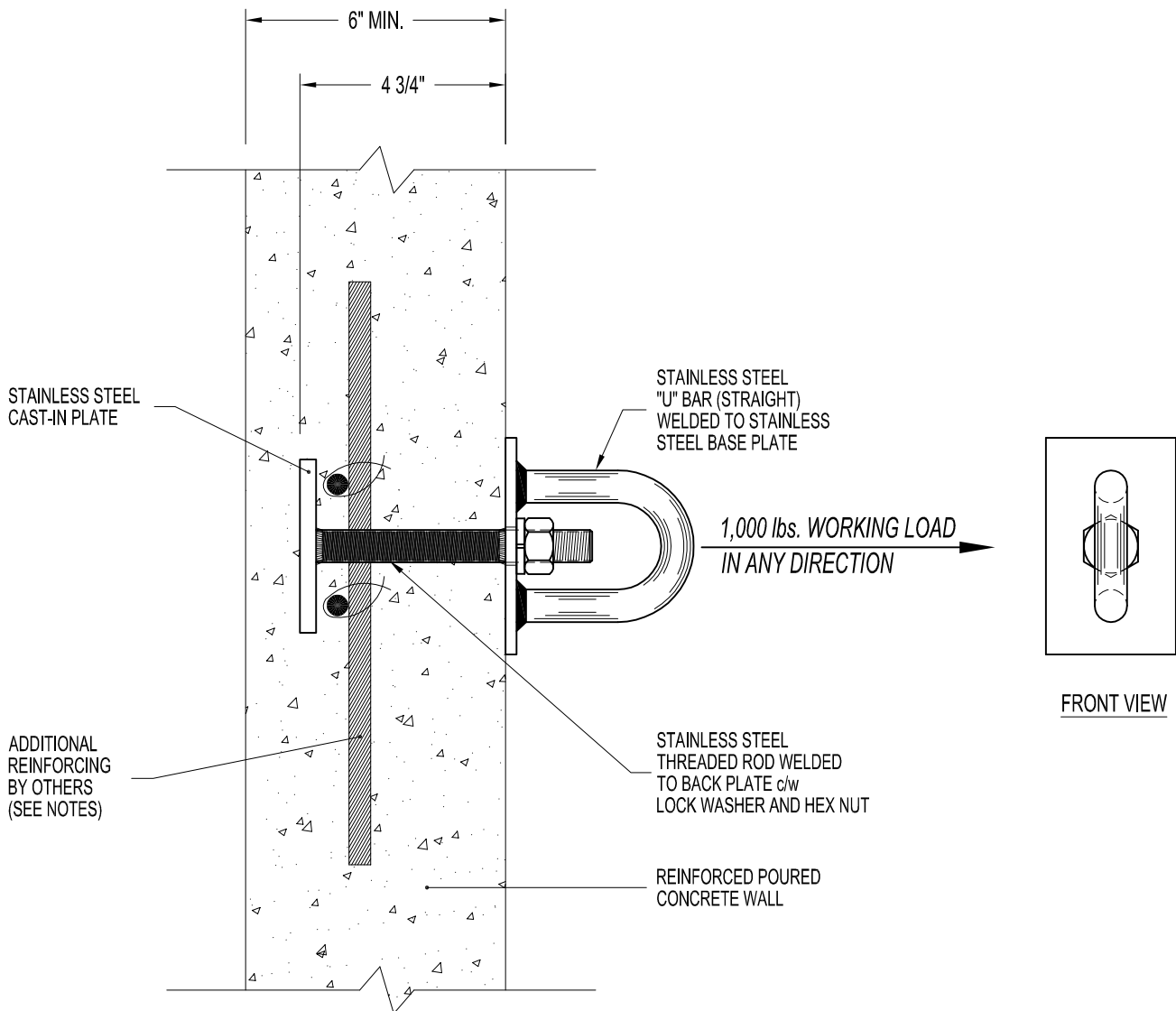


NOTES:

1. 1,000 lbs. WORKING LOAD IN ANY DIRECTION.
2. ASSEMBLY SHOWN AS CAST IN REINFORCED POURED CONCRETE WALL.
3. MINIMUM CONCRETE THICKNESS IS 6".
4. MINIMUM EMBEDMENT OF PRO-BEL ANCHOR IN CONCRETE TO BE 4 3/4".
5. ANCHOR BASE PLATE MUST BEAR ON CONCRETE.

IMPORTANT:

1. THE SAFETY ANCHOR HAS BEEN DESIGNED TO ENSURE THAT FRACTURE OR DETACHMENT DOES NOT OCCUR WITH A 5,000 lbs. (22.2 kN) LOAD.
2. IT IS THE RESPONSIBILITY OF THE STRUCTURAL ENGINEER FOR THE OVERALL PROJECT TO ENSURE THAT THE STRUCTURE ON WHICH THE SAFETY EQUIPMENT BY PRO-BEL IS INSTALLED, IS REINFORCED TO WITHSTAND THE LOADS INDICATED ON THIS DRAWING.



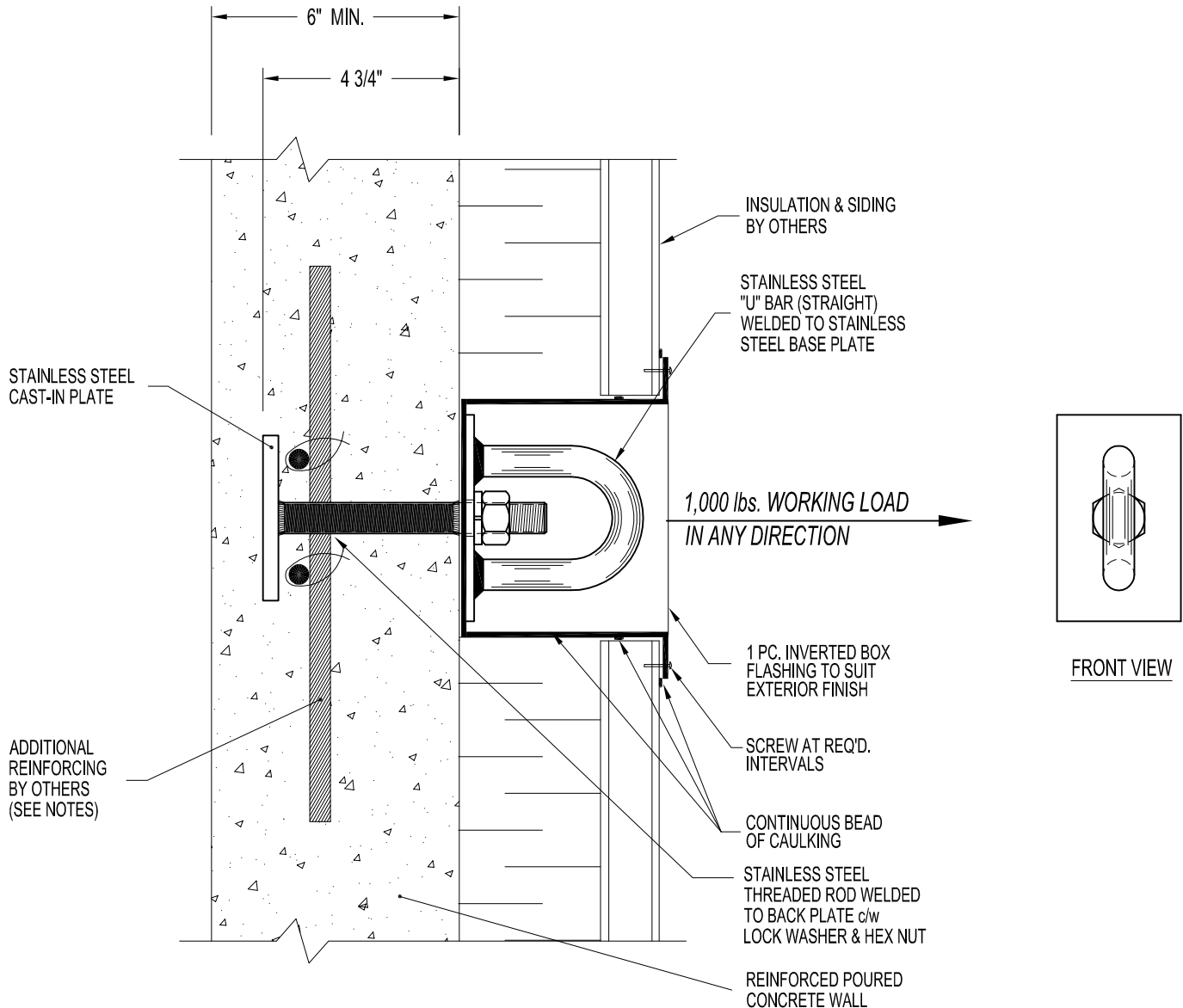
PB69SP: WALL ANCHOR CAST IN REINFORCED POURED CONCRETE STRUCTURE

NOTES:

1. 1,000 lbs. WORKING LOAD IN ANY DIRECTION.
2. ASSEMBLY SHOWN AS CAST IN REINFORCED POURED CONCRETE WALL.
3. MINIMUM CONCRETE THICKNESS IS 6".
4. MINIMUM EMBEDMENT OF PRO-BEL ANCHOR IN CONCRETE TO BE 4 3/4".
5. ANCHOR BASE PLATE MUST BEAR ON CONCRETE.

IMPORTANT:

1. THE SAFETY ANCHOR HAS BEEN DESIGNED TO ENSURE THAT FRACTURE OR DETACHMENT DOES NOT OCCUR WITH A 5,000 lbs. (22.2 KN) LOAD.
2. IT IS THE RESPONSIBILITY OF THE STRUCTURAL ENGINEER FOR THE OVERALL PROJECT TO ENSURE THAT THE STRUCTURE ON WHICH THE SAFETY EQUIPMENT BY PRO-BEL IS INSTALLED, IS REINFORCED TO WITHSTAND THE LOADS INDICATED ON THIS DRAWING.



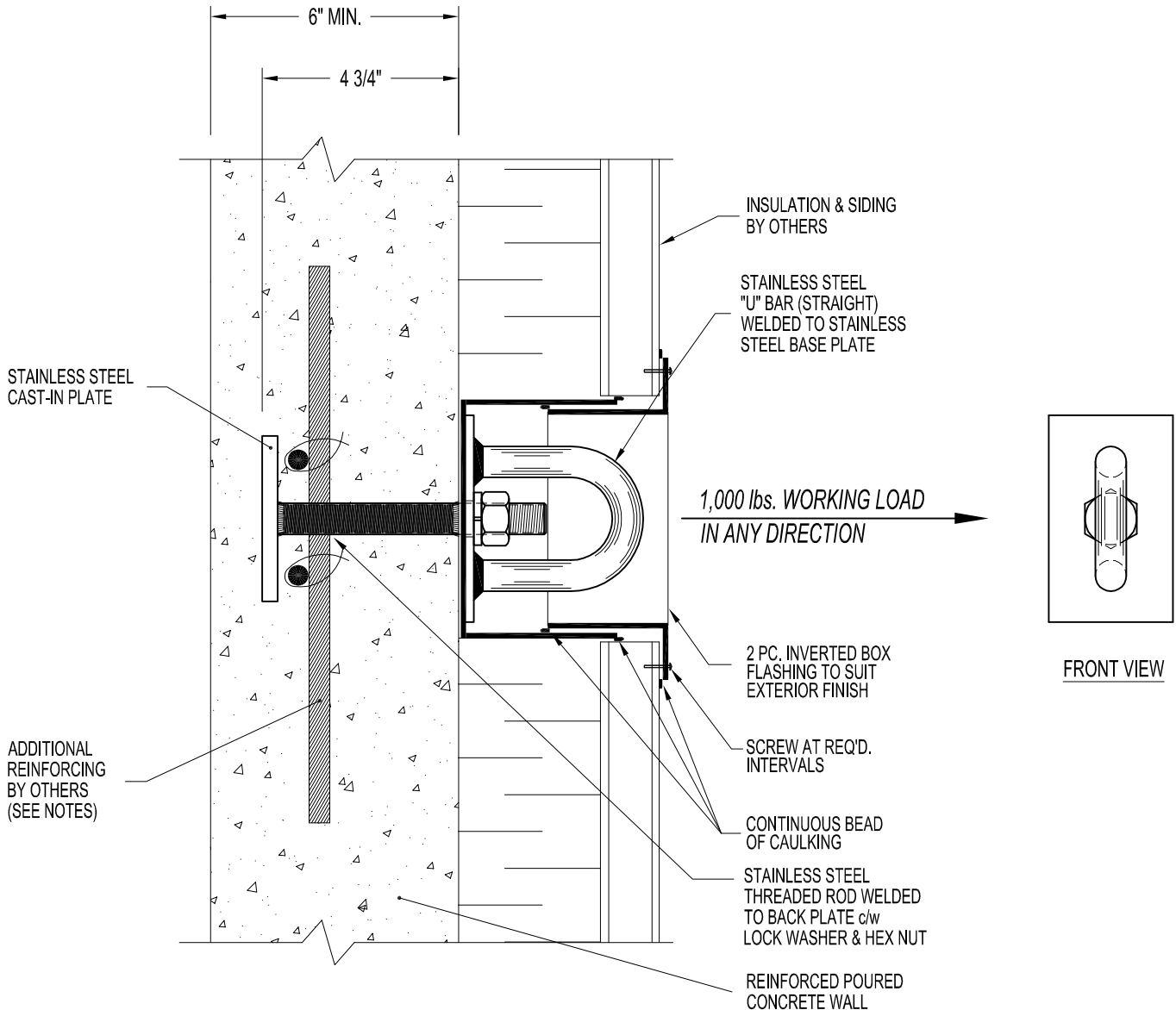
PB69SP-BF1: WALL ANCHOR CAST IN CONCRETE WALL w/ 1 PC BOX FLASHING

NOTES:

1. 1,000 lbs. WORKING LOAD IN ANY DIRECTION.
2. ASSEMBLY SHOWN AS CAST IN REINFORCED POURED CONCRETE WALL.
3. MINIMUM CONCRETE THICKNESS IS 6".
4. MINIMUM EMBEDMENT OF PRO-BEL ANCHOR IN CONCRETE TO BE 4 3/4".
5. ANCHOR BASE PLATE MUST BEAR ON CONCRETE.

IMPORTANT:

1. THE SAFETY ANCHOR HAS BEEN DESIGNED TO ENSURE THAT FRACTURE OR DETACHMENT DOES NOT OCCUR WITH A 5,000 lbs. (22.2 KN) LOAD.
2. IT IS THE RESPONSIBILITY OF THE STRUCTURAL ENGINEER FOR THE OVERALL PROJECT TO ENSURE THAT THE STRUCTURE ON WHICH THE SAFETY EQUIPMENT BY PRO-BEL IS INSTALLED, IS REINFORCED TO WITHSTAND THE LOADS INDICATED ON THIS DRAWING.



PB69SP-BF2: WALL ANCHOR CAST IN CONCRETE WALL w/ 2 PC BOX FLASHING