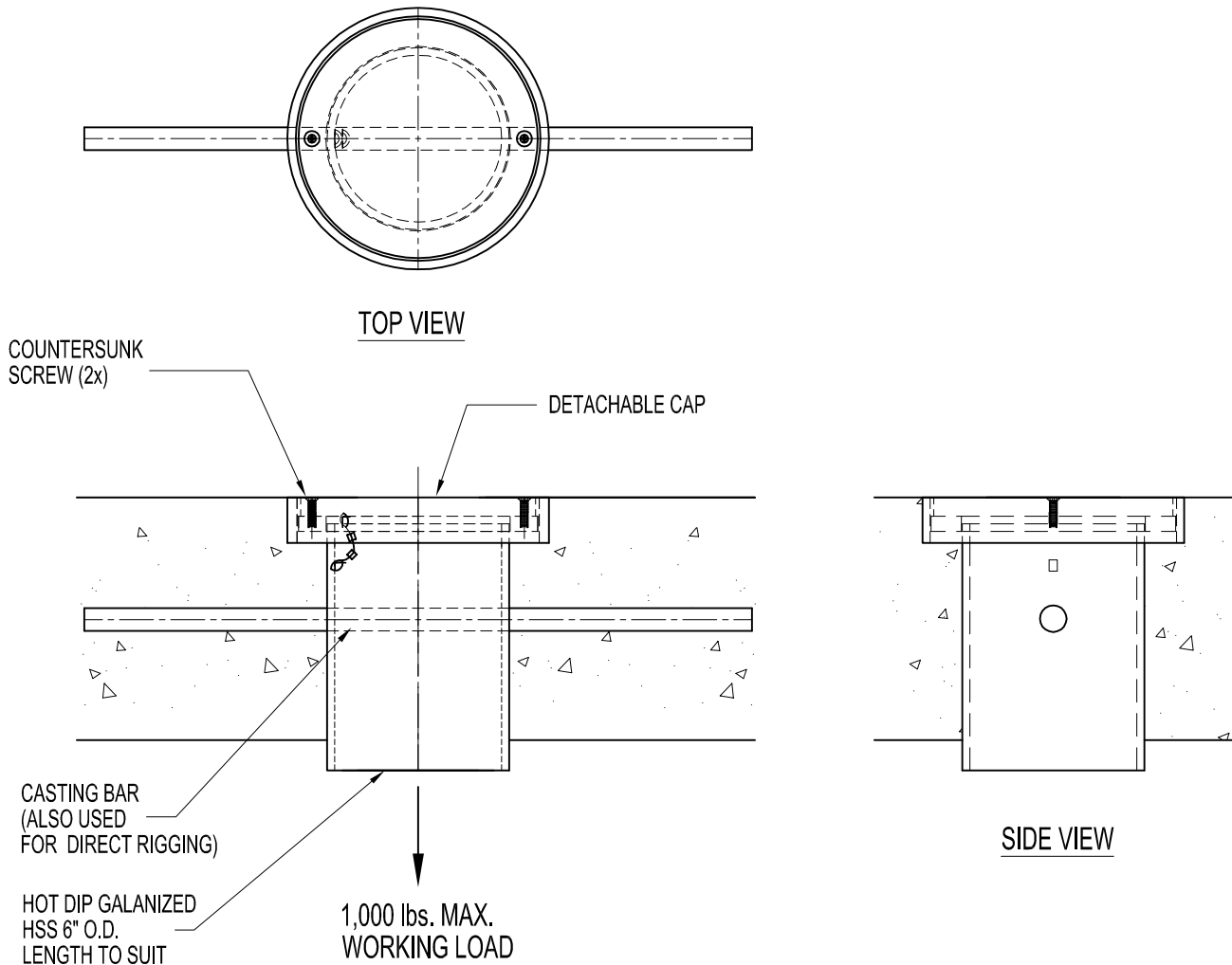


NOTES:

1. 1,000 lbs. WORKING LOAD IN VERTICAL DIRECTION.
2. ASSEMBLY SHOWN IS WITH STANDARD SLAB THICKNESS OF 6".
3. TOP OF SLEEVE IS FLUSH WITH TOP OF CONCRETE SLAB.
4. USE THIS 1-BAR DESIGN MODEL ONLY WHEN THE LIFELINE IS ATTACHED TO A SEPARATE ANCHOR OR RIGGING SLEEVE.

IMPORTANT:

1. RIGGING SLEEVES ARE DESIGNED TO A TYPICAL SUSPENSION WORKING LOAD OF 1,000 lbs. (4.5 kN), WITH A FACTOR OF SAFETY OF 4 AGAINST FRACTURE OR DETACHMENT.
2. IT IS THE RESPONSIBILITY OF THE STRUCTURAL ENGINEER FOR THE OVERALL PROJECT TO ENSURE THAT THE STRUCTURE ON WHICH THE SAFETY EQUIPMENT BY PRO-BEL IS INSTALLED, IS REINFORCED TO WITHSTAND THE LOADS INDICATED ON THIS DRAWING.



A-RSV6002: CAST IN PLACE RECESSED - VERTICAL RIGGING SLEEVE ASS'Y (Ø6" TUBE, TYP.)