

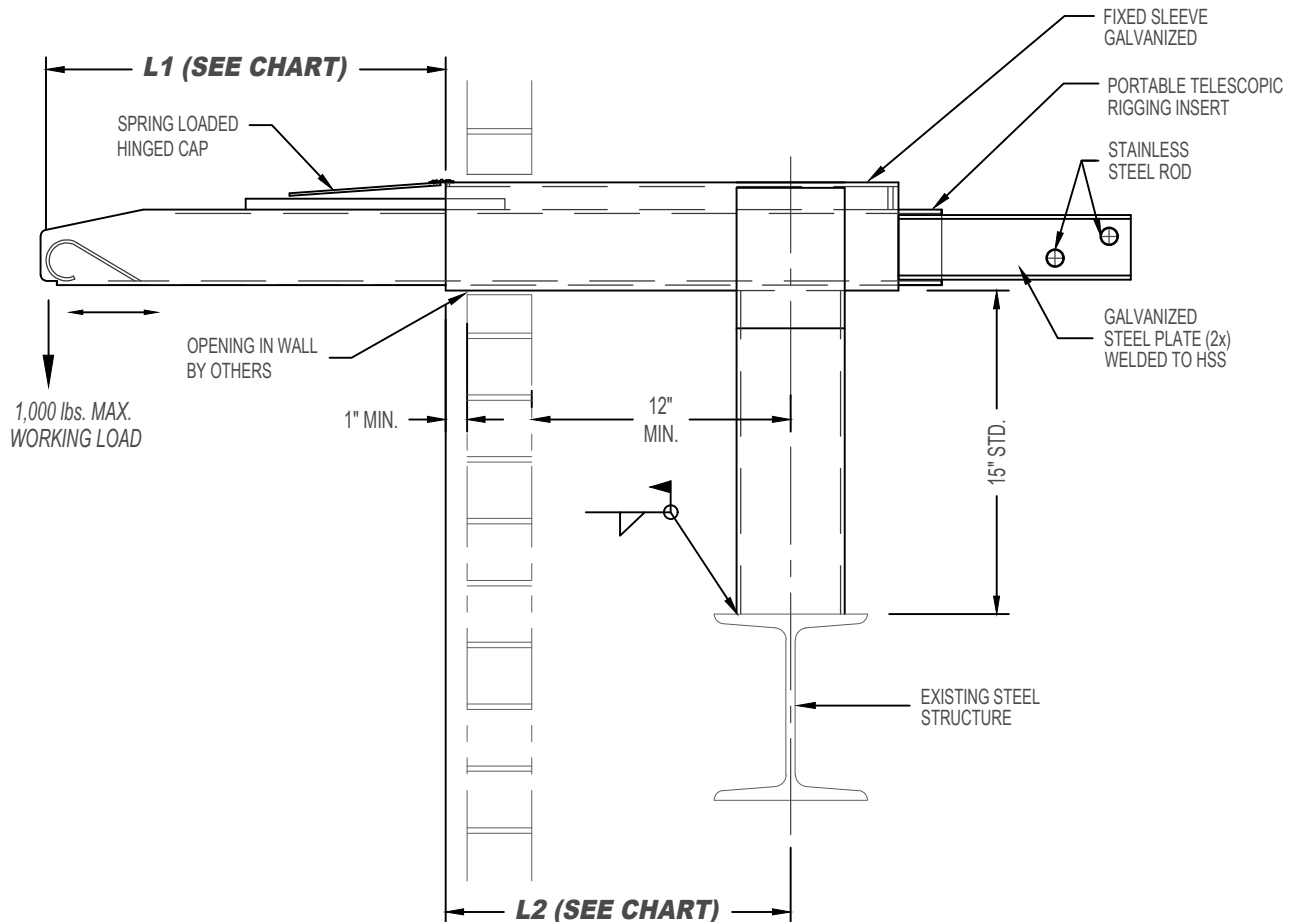
NOTES:

- 1,000 lbs. WORKING LOAD IN VERTICAL DIRECTION.
- ASSEMBLY SHOWN IS 1-BAR SLEEVE DESIGN. WORKER'S LIFELINE TO BE TIED TO INDEPENDENT ANCHOR.

IMPORTANT:

- RIGGING SLEEVES ARE DESIGNED TO A TYPICAL SUSPENSION WORKING LOAD OF 1,000 lbs. (4.5 KN), WITH A FACTOR OF SAFETY OF 4 AGAINST FRACTURE OR DETACHMENT.
- IT IS THE RESPONSIBILITY OF THE STRUCTURAL ENGINEER FOR THE OVERALL PROJECT TO ENSURE THAT THE STRUCTURE ON WHICH THE SAFETY EQUIPMENT BY PRO-BEL IS INSTALLED, IS REINFORCED TO WITHSTAND THE LOADS INDICATED ON THIS DRAWING.

LIMIT CHART	
L1	L2
18" MIN.	35" MAX.
24" (STD.)	29" MAX.
28" MAX.	25" MAX.



WELD TO STEEL - HORIZONTAL RIGGING SLEEVE ASS'Y (5x4 FIXED SLEEVE, TYP.)