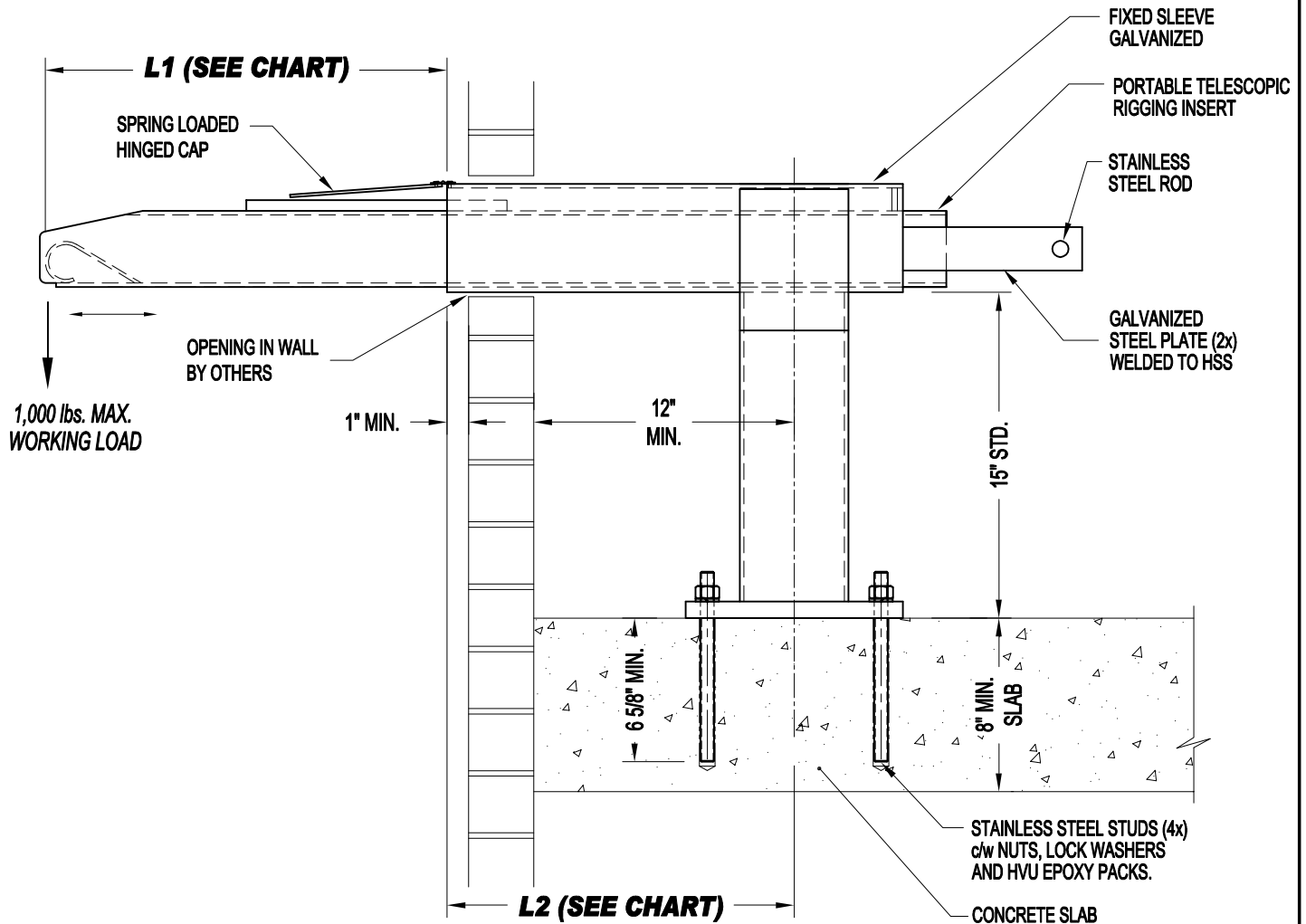


NOTES:

- 1,000 lbs. WORKING LOAD IN VERTICAL DIRECTION.
- ASSEMBLY SHOWN IS 1-BAR SLEEVE DESIGN. WORKER'S LIFELINE TO BE TIED TO INDEPENDENT ANCHOR.
- MINIMUM CONCRETE SLAB THICKNESS IS 8".

LIMIT CHART	
L1	L2
18" MIN.	35" MAX.
24" (STD.)	29" MAX.
28" MAX.	25" MAX.



IMPORTANT:

- RIGGING SLEEVES ARE DESIGNED TO A TYPICAL SUSPENSION WORKING LOAD OF 1,000 lbs. (4.5 kN), WITH A FACTOR OF SAFETY OF 4 AGAINST FRACTURE OR DETACHMENT.
- IT IS THE RESPONSIBILITY OF THE STRUCTURAL ENGINEER FOR THE OVERALL PROJECT TO ENSURE THAT THE STRUCTURE ON WHICH THE SAFETY EQUIPMENT BY PRO-BEL IS INSTALLED, IS REINFORCED TO WITHSTAND THE LOADS INDICATED ON THIS DRAWING.



PRO-BEL ENTERPRISES LTD.
 765 WESTNEY ROAD S., AJAX, ONTARIO L1S 6W1
 TEL: (905) 427-0616 FAX: (905) 427-2545
 1(800) 461-0575
 VISIT OUR WEB SITE @ WWW.PRO-BEL.CA

PRO-BEL DESIGNS, MANUFACTURES, AND INSTALLS PRE-ENGINEERED WINDOW CLEANING/SUSPENDED MAINTENANCE EQUIPMENT & FALL PROTECTION SYSTEMS

- ROOF & WALL ANCHORS
- OUTRIGGER BEAMS
- POWERED PLATFORMS
- RIGGING SLEEVES
- DAVITS
- HORIZONTAL LIFELINE SYSTEMS
- MONORAIL SYSTEMS
- ROOF CARS
- GANTRIES
- LADDERS & GUARDRAILS
- MATERIALS WINCH-HOISTS
- STABILIZATION SYSTEMS & more...