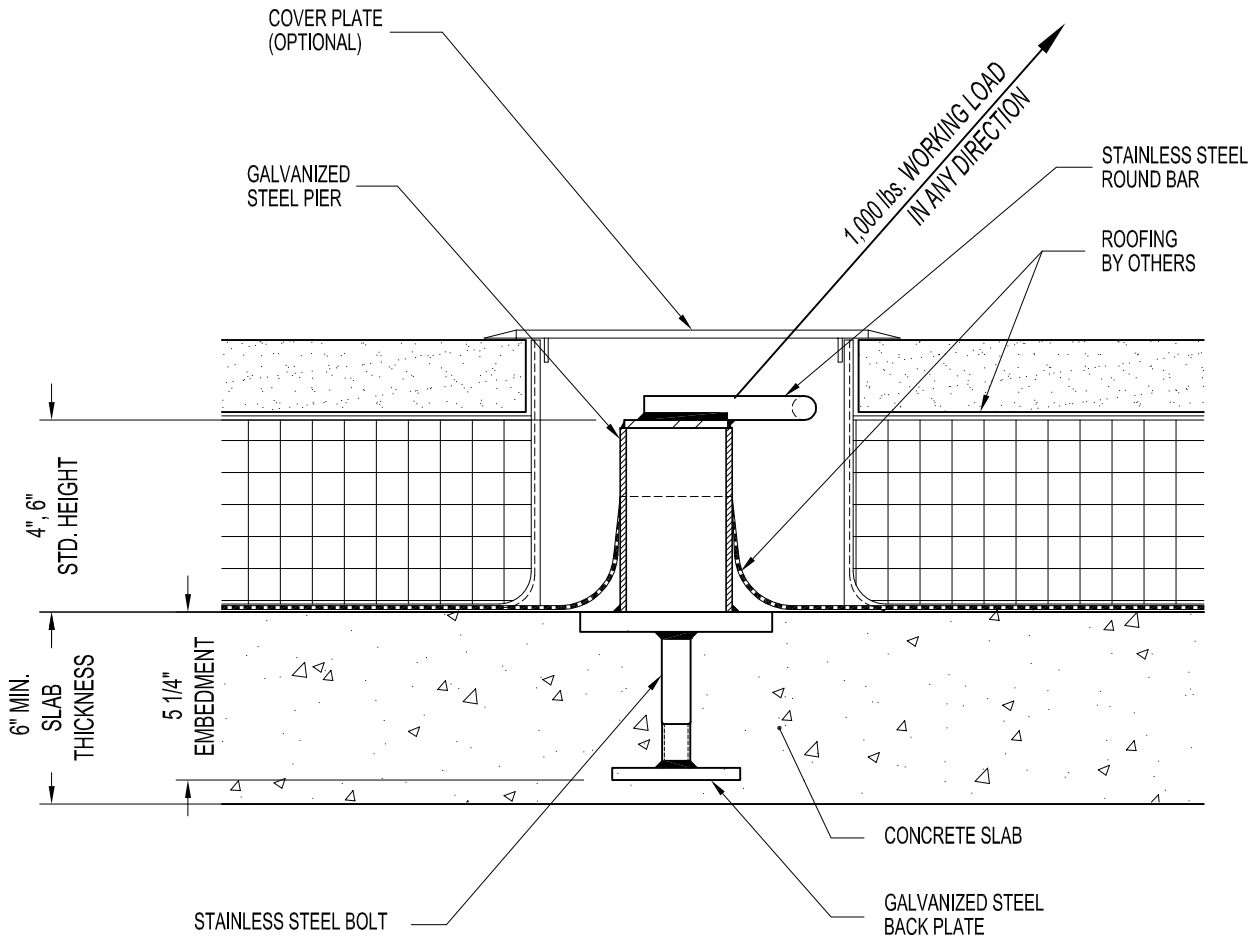


NOTES:

1. 1,000 lbs. WORKING LOAD IN ANY DIRECTION.
2. ASSEMBLY SHOWN AS CAST IN REINFORCED POURED CONCRETE ROOF.
3. MINIMUM EMBEDMENT OF PRO-BEL ANCHOR IN CONCRETE TO BE 5 1/4".
4. MINIMUM CONCRETE SLAB THICKNESS IS 6".

IMPORTANT:

1. THE SAFETY ANCHOR HAS BEEN DESIGNED TO ENSURE THAT FRACTURE OR DETACHMENT DOES NOT OCCUR WITH A 5,000 lbs. (22.2 KN) LOAD.
2. IT IS THE RESPONSIBILITY OF THE STRUCTURAL ENGINEER FOR THE OVERALL PROJECT TO ENSURE THAT THE STRUCTURE ON WHICH THE SAFETY EQUIPMENT BY PRO-BEL IS INSTALLED, IS REINFORCED TO WITHSTAND THE LOADS INDICATED ON THIS DRAWING.



MAX. LIMIT = 7"

PBE74-50W1: CAST IN PLACE RECESSED (HORIZONTAL U-BAR) ANCHOR (SINGLE S.S. STUD)