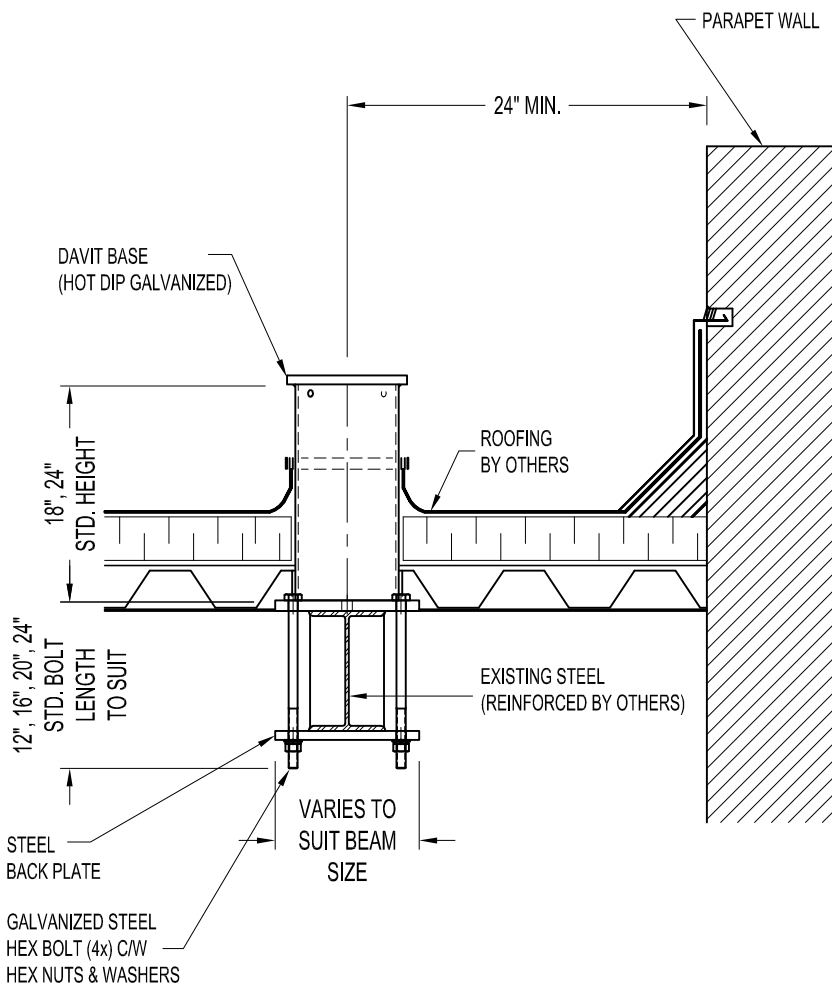


**NOTES:**

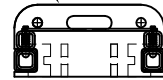
1. 8'-6" MAX. REACH WITH 1,000 lbs. WORKING LOAD.
2. DAVIT BASE ASSEMBLY SHOWN AS WRAPPED AROUND EXISTING STEEL STRUCTURE
3. ASSEMBLY SHOWN IS STANDARD 18" & 24" HIGH MODELS.
4. ASSEMBLY SHOWN CAN BE USED WITH 200 & 500 SERIES ADAPTOR FOR ALL TYPE OF DAVIT ARMS.

**IMPORTANT:**

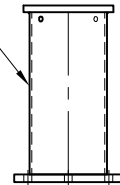
1. DAVIT BASES ARE DESIGNED TO A TYPICAL SUSPENSION LOAD OF 1,000 lbs. (4.5 KN), WITH A FACTOR OF SAFETY OF 4 AGAINST FRACTURE OR DETACHMENT.
2. IT IS THE RESPONSIBILITY OF THE STRUCTURAL ENGINEER FOR THE OVERALL PROJECT TO ENSURE THAT THE STRUCTURE ON WHICH THE SAFETY EQUIPMENT BY PRO-BEL IS INSTALLED, IS REINFORCED TO WITHSTAND THE LOADS INDICATED ON THIS DRAWING.



200 SERIES ADAPTOR  
with or without WINCH SOCKET  
SLIDE ONTO DAVIT BASE  
(MODEL #ADW622-08)

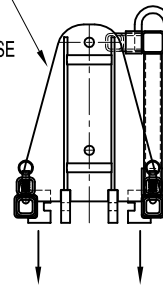


600 SERIES DAVIT BASE  
(MODEL #DB6-23204)

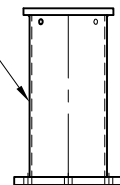


600 SERIES BASE w/ 200 SERIES ADAPTOR

500 SERIES ADAPTOR  
w/ WINCH BRACKET  
SLIDE ONTO DAVIT BASE  
(MODEL #ADW652-22)



600 SERIES DAVIT BASE  
(MODEL #DB6-23204)



600 SERIES BASE w/ 500 SERIES ADAPTOR

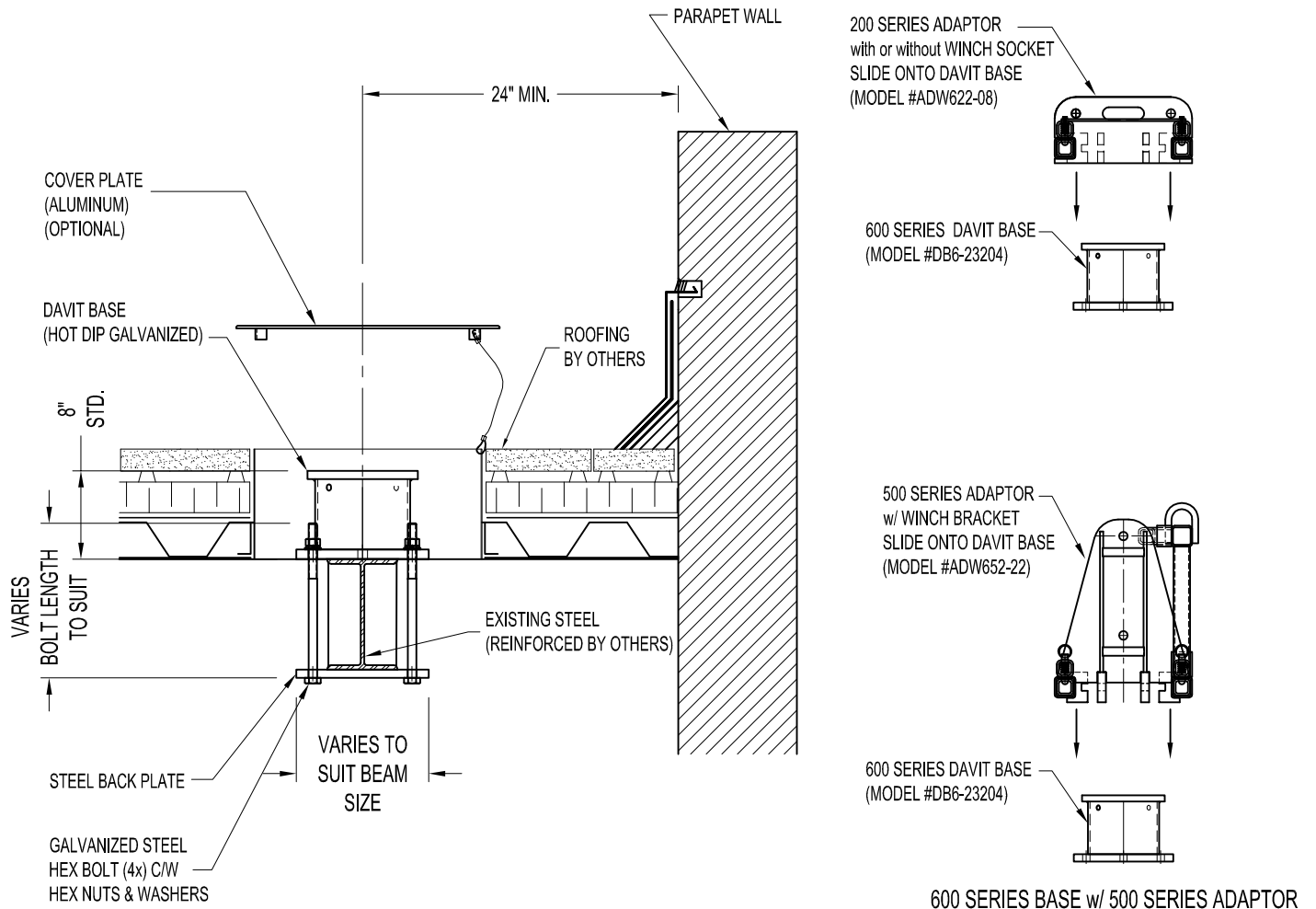
**DB6-23204: 600 SERIES DAVIT BASE (WRAP AROUND) - WITHOUT U-BAR**

**NOTES:**

1. 8'-6" MAX. REACH WITH 1,000 lbs. WORKING LOAD.
2. DAVIT BASE ASSEMBLY SHOWN AS RECESSED SITUATION, WRAPPED AROUND EXISTING STEEL STRUCTURE.
3. ASSEMBLY SHOWN IS STANDARD 8" HIGH MODELS WITH VARIES BOLT LENGTHS, AND VARIES SIZE OF BASE AND BACK PLATES TO SUIT BEAM SIZE.
4. ASSEMBLY SHOWN CAN BE USED WITH 200 & 500 SERIES ADAPTOR FOR ALL TYPE OF DAVIT ARMS.

**IMPORTANT:**

1. DAVIT BASES ARE DESIGNED TO A TYPICAL SUSPENSION LOAD OF 1,000 lbs. (4.5 KN), WITH A FACTOR OF SAFETY OF 4 AGAINST FRACTURE OR DETACHMENT.
2. IT IS THE RESPONSIBILITY OF THE STRUCTURAL ENGINEER FOR THE OVERALL PROJECT TO ENSURE THAT THE STRUCTURE ON WHICH THE SAFETY EQUIPMENT BY PRO-BEL IS INSTALLED, IS REINFORCED TO WITHSTAND THE LOADS INDICATED ON THIS DRAWING.



**DB6-23204: 600 SERIES RECESSED DAVIT BASE - (WRAP AROUND) - WITHOUT U-BAR**