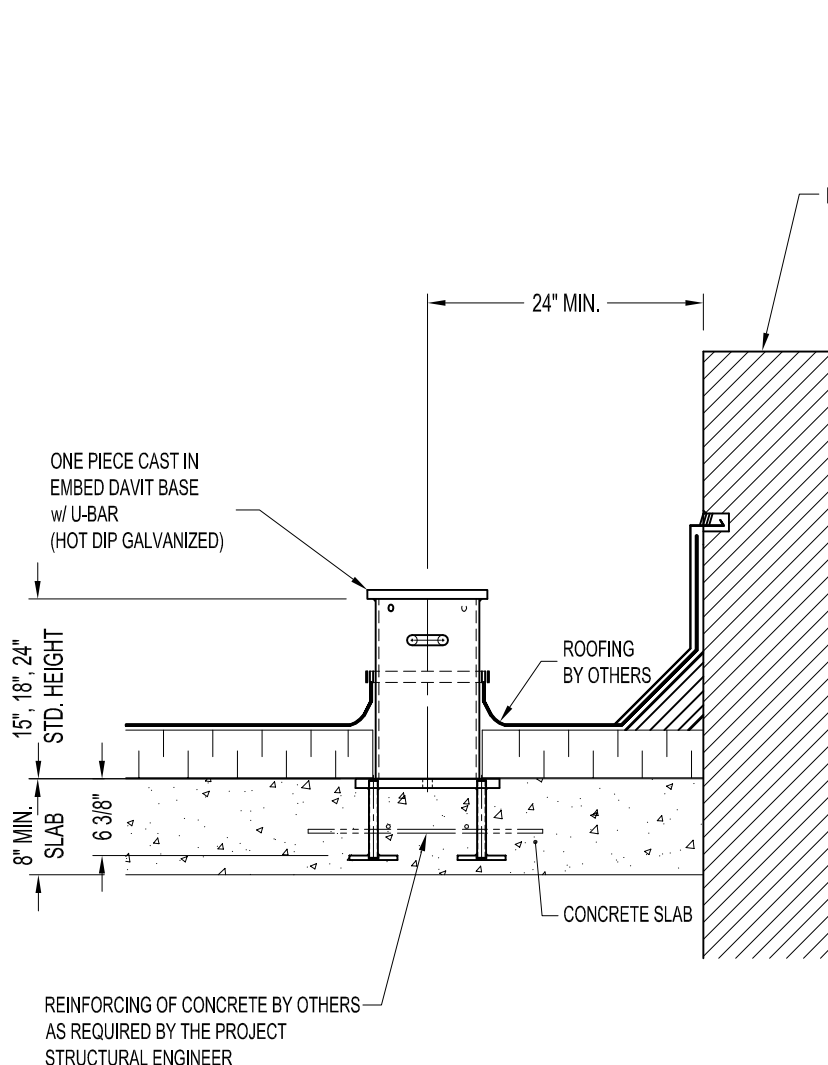


## NOTES:

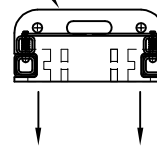
1. 6'-6" MAX. REACH WITH 1,000 lbs. WORKING LOAD.
2. DAVIT BASE ASSEMBLY SHOWN AS ONE PIECE CAST IN EMBED.
3. ASSEMBLY SHOWN IS STANDARD 15", 18" & 24" HIGH MODELS FOR MIN. SLAB THICKNESS OF 8".
4. ASSEMBLY SHOWN CAN BE USED WITH 200 & 500 SERIES ADAPTOR FOR ALL TYPE OF DAVIT ARMS.

## IMPORTANT:

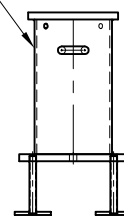
1. DAVIT BASES ARE DESIGNED TO A TYPICAL SUSPENSION LOAD OF 1,000 lbs. (4.5 KN), WITH A FACTOR OF SAFETY OF 4 AGAINST FRACTURE OR DETACHMENT.
2. IT IS THE RESPONSIBILITY OF THE STRUCTURAL ENGINEER FOR THE OVERALL PROJECT TO ENSURE THAT THE STRUCTURE ON WHICH THE SAFETY EQUIPMENT BY PRO-BEL IS INSTALLED, IS REINFORCED TO WITHSTAND THE LOADS INDICATED ON THIS DRAWING.



200 SERIES ADAPTOR  
with or without WINCH SOCKET  
SLIDE ONTO DAVIT BASE  
(MODEL #ADW622-08)

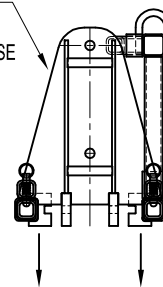


600 SERIES ONE PIECE  
CAST IN EMBED  
DAVIT BASE w/ U-BAR  
(MODEL #DB6-23118)

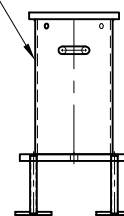


600 SERIES BASE w/ 200 SERIES ADAPTOR

500 SERIES ADAPTOR  
w/ WINCH BRACKET  
SLIDE ONTO DAVIT BASE  
(MODEL #ADW652-22)



600 SERIES ONE PIECE  
CAST IN EMBED  
DAVIT BASE w/ U-BAR  
(MODEL #DB6-23118)



600 SERIES BASE w/ 500 SERIES ADAPTOR

**DB6-23118: 600 SERIES ONE PIECE CAST IN EMBED DAVIT BASE - WITH U-BAR**

## NOTES:

1. 8'-6" MAX. REACH WITH 1,000 lbs. WORKING LOAD.
2. DAVIT BASE ASSEMBLY SHOWN AS RECESSED SITUATION, ONE PIECE CAST IN EMBED.
3. ASSEMBLY SHOWN IS STANDARD 6" HIGH MODELS FOR MINIMUM SLAB THICKNESS OF 8".
4. ASSEMBLY SHOWN CAN BE USED WITH 200 & 500 SERIES ADAPTOR FOR ALL TYPE OF DAVIT ARMS.

## IMPORTANT:

1. DAVIT BASES ARE DESIGNED TO A TYPICAL SUSPENSION LOAD OF 1,000 lbs. (4.5 KN), WITH A FACTOR OF SAFETY OF 4 AGAINST FRACTURE OR DETACHMENT.
2. IT IS THE RESPONSIBILITY OF THE STRUCTURAL ENGINEER FOR THE OVERALL PROJECT TO ENSURE THAT THE STRUCTURE ON WHICH THE SAFETY EQUIPMENT BY PRO-BEL IS INSTALLED, IS REINFORCED TO WITHSTAND THE LOADS INDICATED ON THIS DRAWING.

