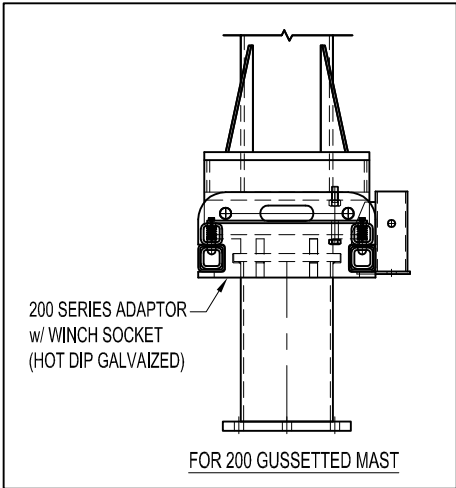
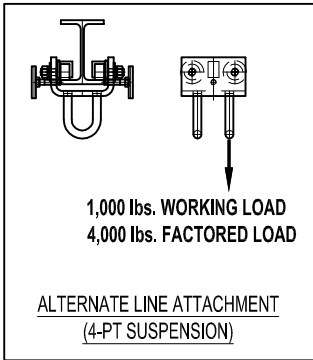
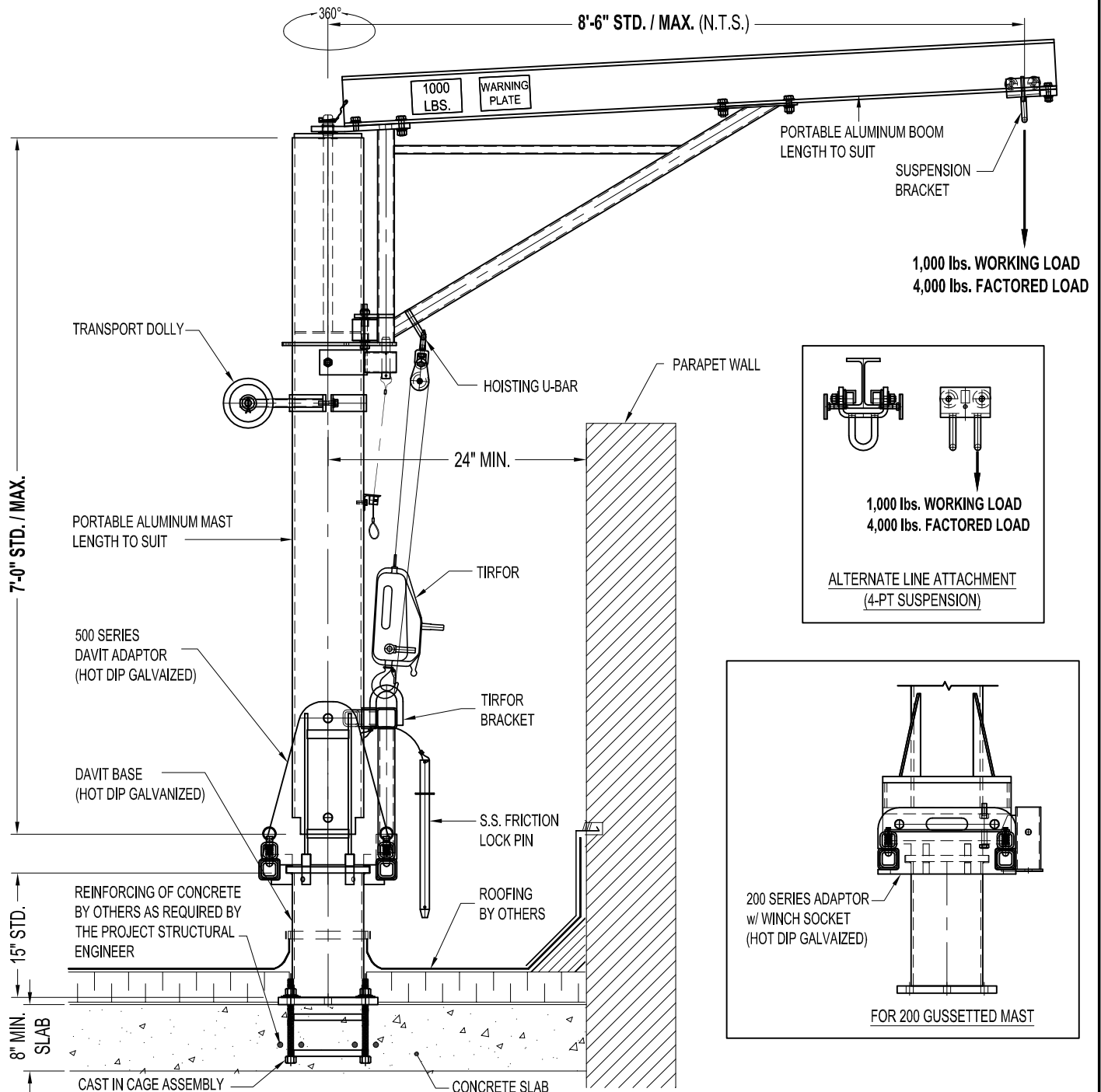


NOTES:

1. SYSTEM SHOWN BELOW IS FOR 1,000 lbs. WORKING LOAD.
2. ASSEMBLY SHOWN IS TOP ROTATING DAVIT ARM TYPE A401 (SHORT SERIES), 600 SERIES DAVIT BASE, 500 SERIES ADAPTOR, AND CAST IN CAGE.
3. MODEL SHOWN IS FOR A GROUND RIGGED APPLICATION FOR CLEARING THE TALL PARAPET.

IMPORTANT:

1. DAVITS ARE DESIGNED TO A TYPICAL SUSPENSION LOAD OF 1,000 lbs. (4.5 KN), WITH A FACTOR OF SAFETY OF 4 AGAINST FRACTURE OR DETACHMENT.
2. IT IS THE RESPONSIBILITY OF THE STRUCTURAL ENGINEER FOR THE OVERALL PROJECT TO ENSURE THAT THE STRUCTURE ON WHICH THE SAFETY EQUIPMENT BY PRO-BEL IS INSTALLED, IS REINFORCED TO WITHSTAND THE LOADS INDICATED ON THIS DRAWING.



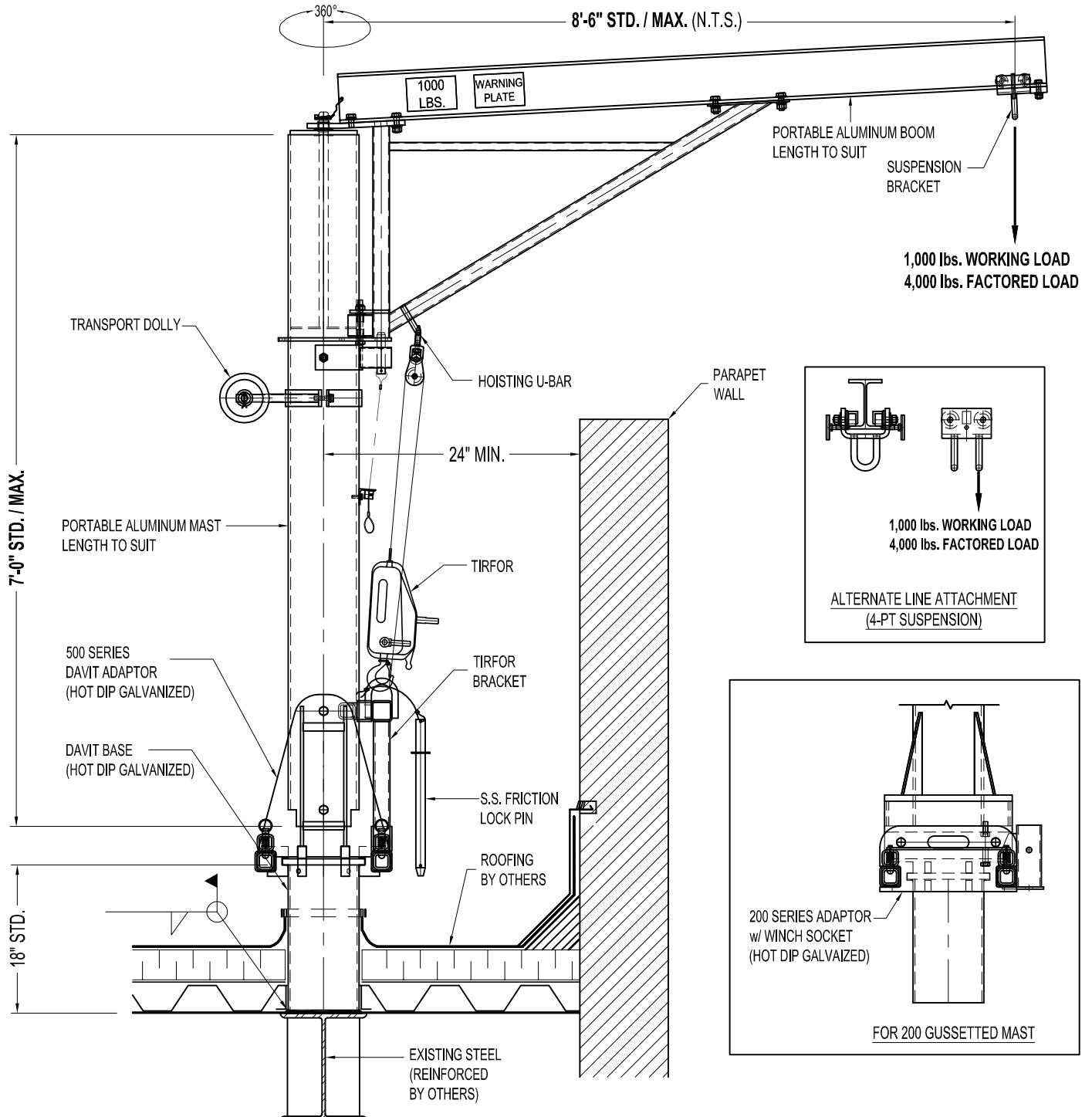
A-D40163-8S: DAVIT ASSEMBLY A401 ARM - SHORT SERIES w/ 600 BASE - CAST IN CAGE

NOTES:

1. SYSTEM SHOWN BELOW IS FOR 1,000 lbs. WORKING LOAD.
2. ASSEMBLY SHOWN IS TOP ROTATING DAVIT ARM TYPE A401 (SHORT SERIES), 600 SERIES DAVIT BASE, 500 SERIES ADAPTOR.
3. MODEL SHOWN IS FOR A GROUND RIGGED APPLICATION FOR CLEARING THE TALL PARAPET.

IMPORTANT:

1. DAVITS ARE DESIGNED TO A TYPICAL SUSPENSION LOAD OF 1,000 lbs. (4.5 KN), WITH A FACTOR OF SAFETY OF 4 AGAINST FRACTURE OR DETACHMENT.
2. IT IS THE RESPONSIBILITY OF THE STRUCTURAL ENGINEER FOR THE OVERALL PROJECT TO ENSURE THAT THE STRUCTURE ON WHICH THE SAFETY EQUIPMENT BY PRO-BEL IS INSTALLED, IS REINFORCED TO WITHSTAND THE LOADS INDICATED ON THIS DRAWING.



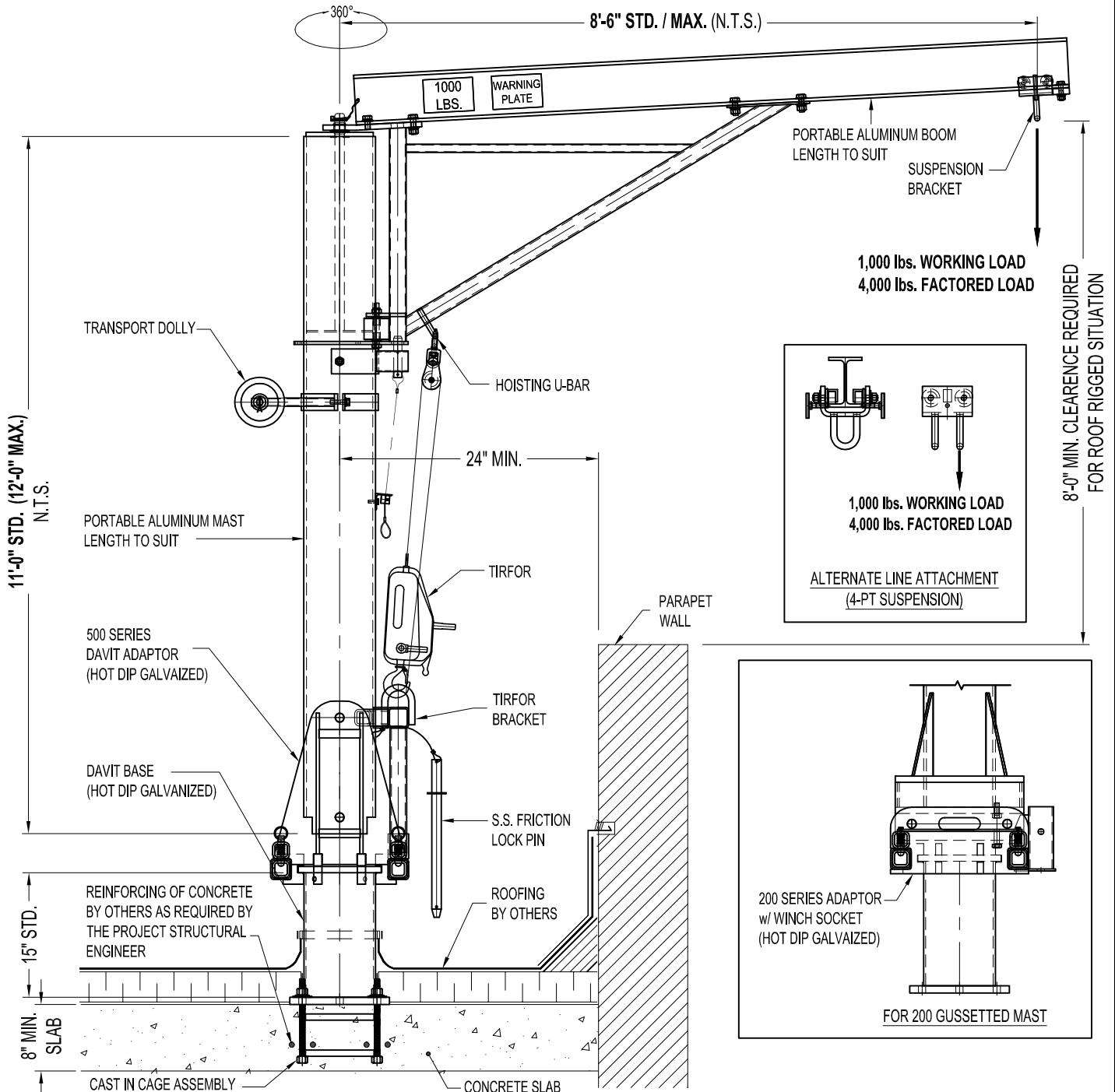
A-D40165-8S: DAVIT ASSEMBLY A401 ARM - SHORT SERIES w/ 600 BASE - WELDMENT

NOTES:

1. SYSTEM SHOWN BELOW IS FOR 1,000 lbs. WORKING LOAD.
2. ASSEMBLY SHOWN IS TOP ROTATING DAVIT ARM TYPE A401 (TALL SERIES), 600 SERIES DAVIT BASE, 500 SERIES ADAPTOR, AND CAST IN CAGE.
3. MODEL SHOWN IS MAINLY FOR A ROOF RIGGED APPLICATION. IN SOME CASES, IT CAN BE USED AS GROUND RIGGED FOR CLEARING THE TALL PARAPET.

IMPORTANT:

1. DAVITS ARE DESIGNED TO A TYPICAL SUSPENSION LOAD OF 1,000 lbs. (4.5 KN), WITH A FACTOR OF SAFETY OF 4 AGAINST FRACTURE OR DETACHMENT.
2. IT IS THE RESPONSIBILITY OF THE STRUCTURAL ENGINEER FOR THE OVERALL PROJECT TO ENSURE THAT THE STRUCTURE ON WHICH THE SAFETY EQUIPMENT BY PRO-BEL IS INSTALLED, IS REINFORCED TO WITHSTAND THE LOADS INDICATED ON THIS DRAWING.



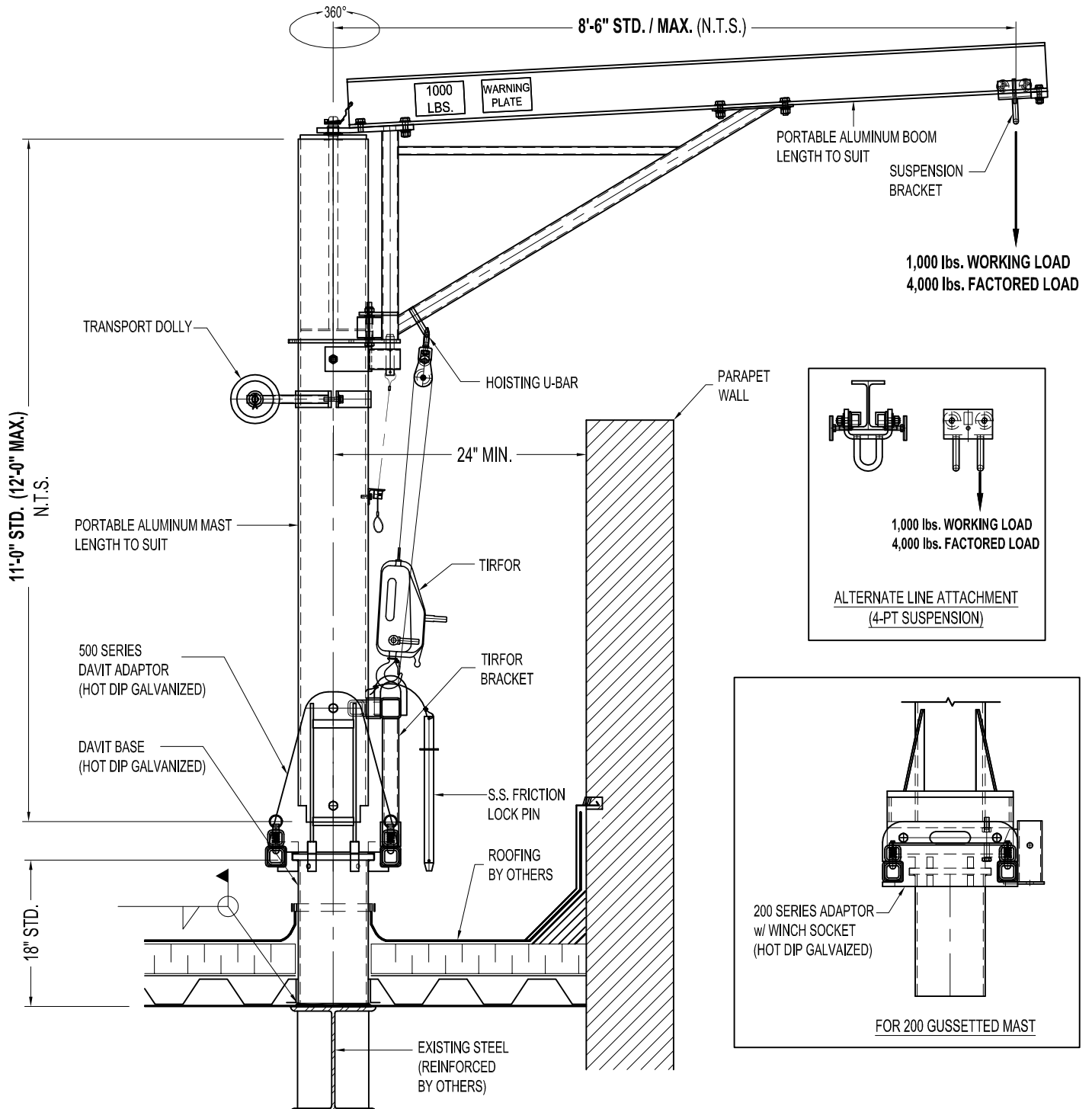
A-D40163-8T: DAVIT ASSEMBLY A401 ARM - TALL SERIES w/ 600 BASE - CAST IN CAGE

NOTES:

1. SYSTEM SHOWN BELOW IS FOR 1,000 lbs. WORKING LOAD.
2. ASSEMBLY SHOWN IS TOP ROTATING DAVIT ARM TYPE A401 (TALL SERIES), 600 SERIES DAVIT BASE, 500 SERIES ADAPTOR.
3. MODEL SHOWN IS FOR A GROUND RIGGED APPLICATION FOR CLEARING THE TALL PARAPET.

IMPORTANT:

1. DAVITS ARE DESIGNED TO A TYPICAL SUSPENSION LOAD OF 1,000 lbs. (4.5 KN), WITH A FACTOR OF SAFETY OF 4 AGAINST FRACTURE OR DETACHMENT.
2. IT IS THE RESPONSIBILITY OF THE STRUCTURAL ENGINEER FOR THE OVERALL PROJECT TO ENSURE THAT THE STRUCTURE ON WHICH THE SAFETY EQUIPMENT BY PRO-BEL IS INSTALLED, IS REINFORCED TO WITHSTAND THE LOADS INDICATED ON THIS DRAWING.



A-D40165-8T: DAVIT ASSEMBLY A401 ARM - TALL SERIES w/ 600 BASE - WELDMENT