

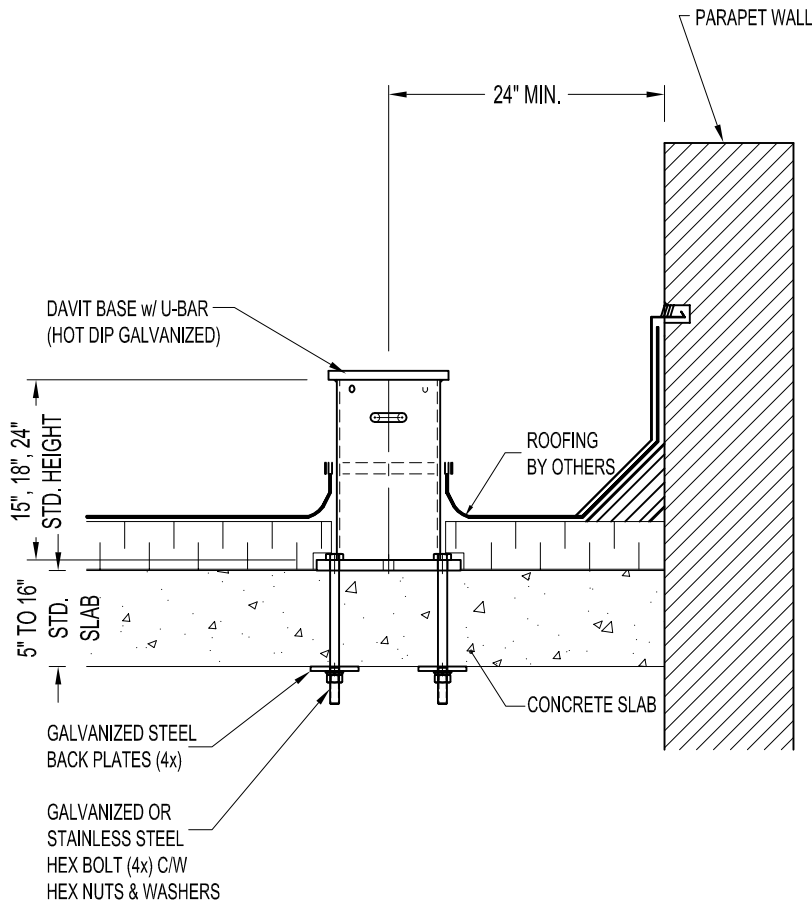
NOTES:

1. 8'-6" MAX. REACH WITH 1,000 lbs. WORKING LOAD.
2. DAVIT BASE ASSEMBLY SHOWN AS BOLTED THROUGH EXISTING CONCRETE SLAB.
3. ASSEMBLY SHOWN IS STANDARD 15", 18" & 24" HIGH MODELS FOR STANDARD SLAB THICKNESS OF 5" TO 16".
4. ASSEMBLY SHOWN CAN BE USED WITH 200 & 500 SERIES ADAPTOR FOR ALL TYPE OF DAVIT ARMS.

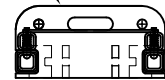
IMPORTANT:

1. DAVIT BASES ARE DESIGNED TO A TYPICAL SUSPENSION LOAD OF 1,000 lbs. (4.5 kN), WITH A FACTOR OF SAFETY OF 4 AGAINST FRACTURE OR DETACHMENT.

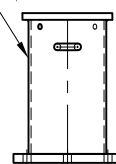
2. IT IS THE RESPONSIBILITY OF THE STRUCTURAL ENGINEER FOR THE OVERALL PROJECT TO ENSURE THAT THE STRUCTURE ON WHICH THE SAFETY EQUIPMENT BY PRO-BEL IS INSTALLED, IS REINFORCED TO WITHSTAND THE LOADS INDICATED ON THIS DRAWING.



200 SERIES ADAPTOR
with or without WINCH SOCKET
SLIDE ONTO DAVIT BASE
(MODEL #ADW622-08)

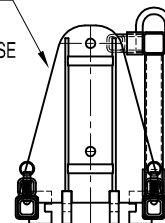


600 SERIES DAVIT BASE
w/ U-BAR
(MODEL #DB6-23211)

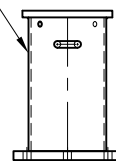


600 SERIES BASE w/ 200 SERIES ADAPTOR

500 SERIES ADAPTOR
w/ WINCH BRACKET
SLIDE ONTO DAVIT BASE
(MODEL #ADW652-22)



600 SERIES DAVIT BASE
w/ U-BAR
(MODEL #DB6-23211)



600 SERIES BASE w/ 500 SERIES ADAPTOR