

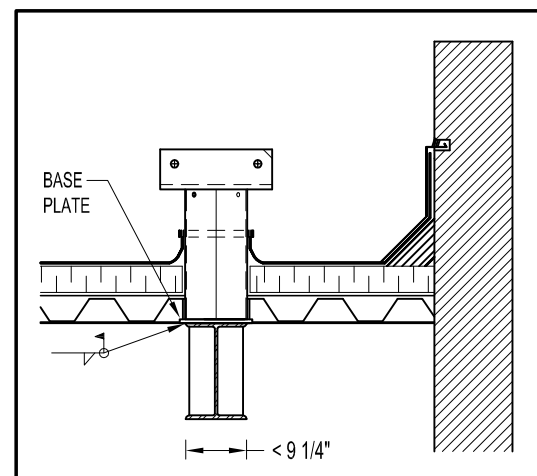
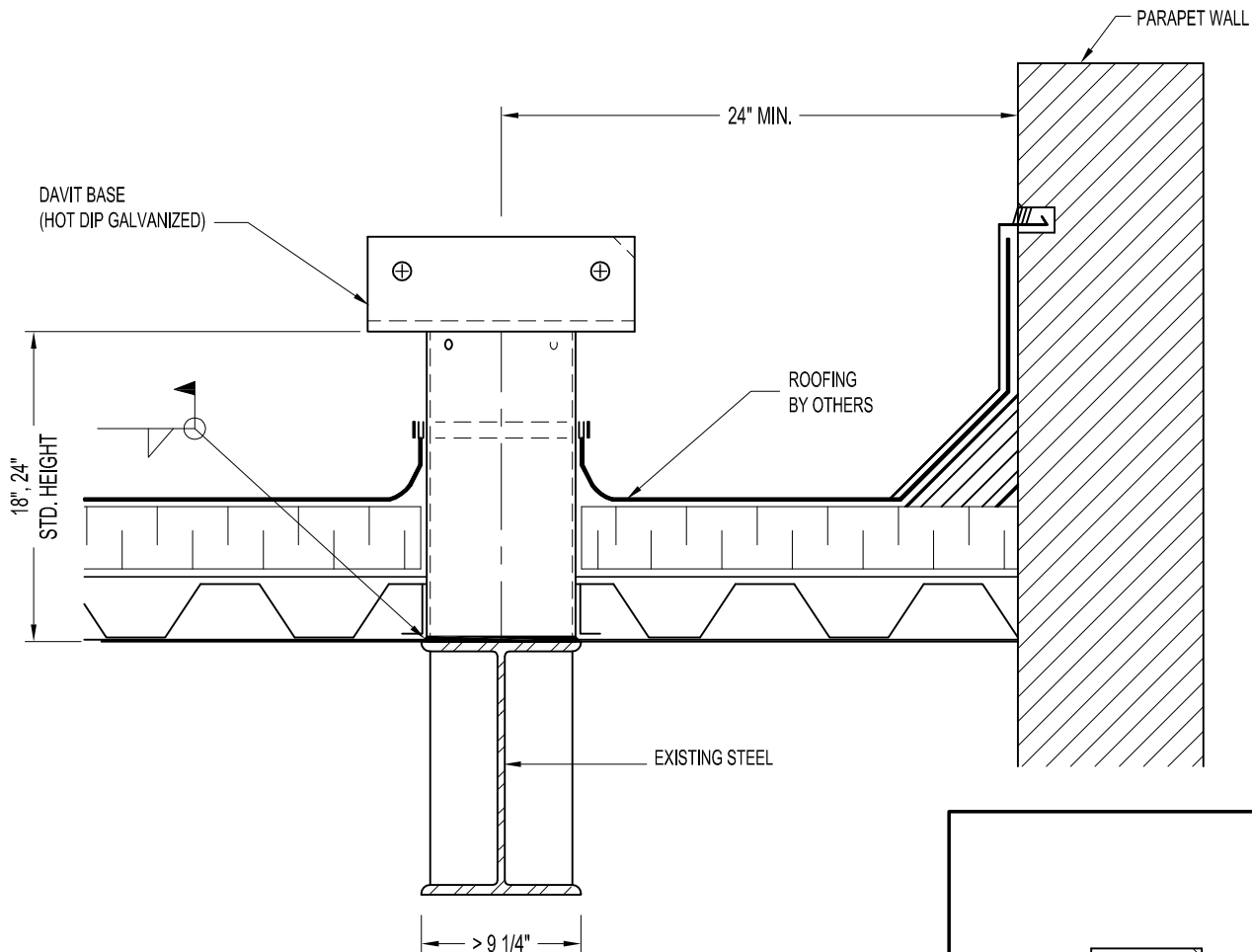
NOTES:

1. 1,000 lbs. WORKING LOAD.
2. 200 SERIES DAVIT BASE (BENT PLATE) ASSEMBLY SHOWN AS WELDED TO EXISTING STEEL STRUCTURE.
3. ASSEMBLY SHOWN IS STANDARD 18" & 24" HIGH MODELS.
4. BASE PLATE REQUIRED WHEN BEAM WIDTH IS LESS THAN 9 1/4".

IMPORTANT:

1. DAVIT BASES ARE DESIGNED TO A TYPICAL SUSPENSION LOAD OF 1,000 lbs. (4.5 kN), WITH A FACTOR OF SAFETY OF 4 AGAINST FRACTURE OR DETACHMENT.

2. IT IS THE RESPONSIBILITY OF THE STRUCTURAL ENGINEER FOR THE OVERALL PROJECT TO ENSURE THAT THE STRUCTURE ON WHICH THE SAFETY EQUIPMENT BY PRO-BEL IS INSTALLED, IS REINFORCED TO WITHSTAND THE LOADS INDICATED ON THIS DRAWING.



DB2-2300A: 200 SERIES DAVIT BASE ASSEMBLY - (WELD TO STEEL) - WITHOUT U-BAR