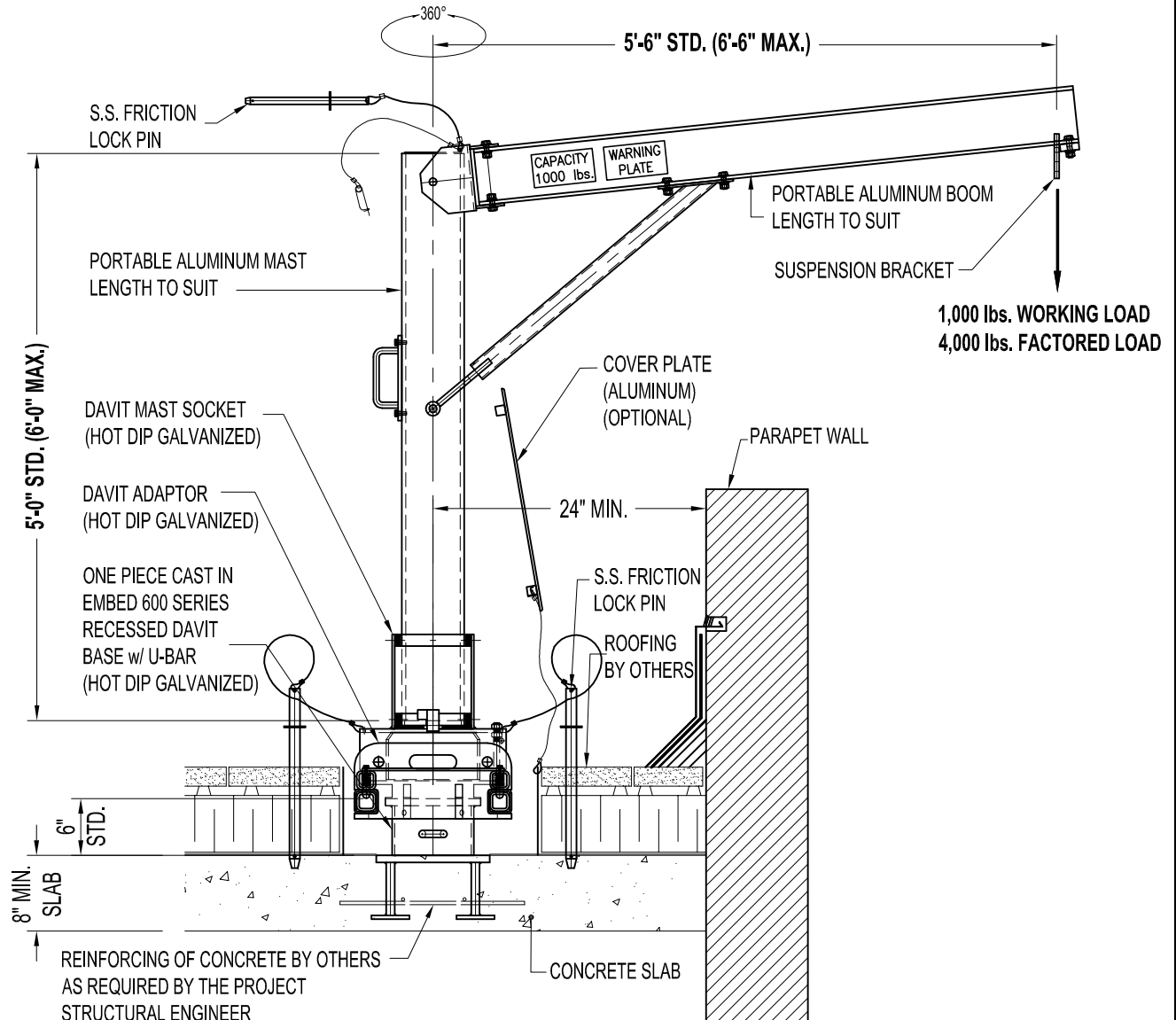


NOTES:

1. SYSTEM SHOWN BELOW IS FOR 1,000 lbs. WORKING LOAD.
2. ASSEMBLY SHOWN IS GROUND RIGGED DAVIT ARM TYPE A100 (SHORT SERIES), ONE PIECE CAST IN EMBED 600 RECESSED DAVIT BASE w/ U-BAR, AND 200 SERIES ADAPTOR.

IMPORTANT:

1. DAVITS ARE DESIGNED TO A TYPICAL SUSPENSION LOAD OF 1,000 lbs. (4.5 kN), WITH A FACTOR OF SAFETY OF 4 AGAINST FRACTURE OR DETACHMENT.
2. IT IS THE RESPONSIBILITY OF THE STRUCTURAL ENGINEER FOR THE OVERALL PROJECT TO ENSURE THAT THE STRUCTURE ON WHICH THE SAFETY EQUIPMENT BY PRO-BEL IS INSTALLED, IS REINFORCED TO WITHSTAND THE LOADS INDICATED ON THIS DRAWING.



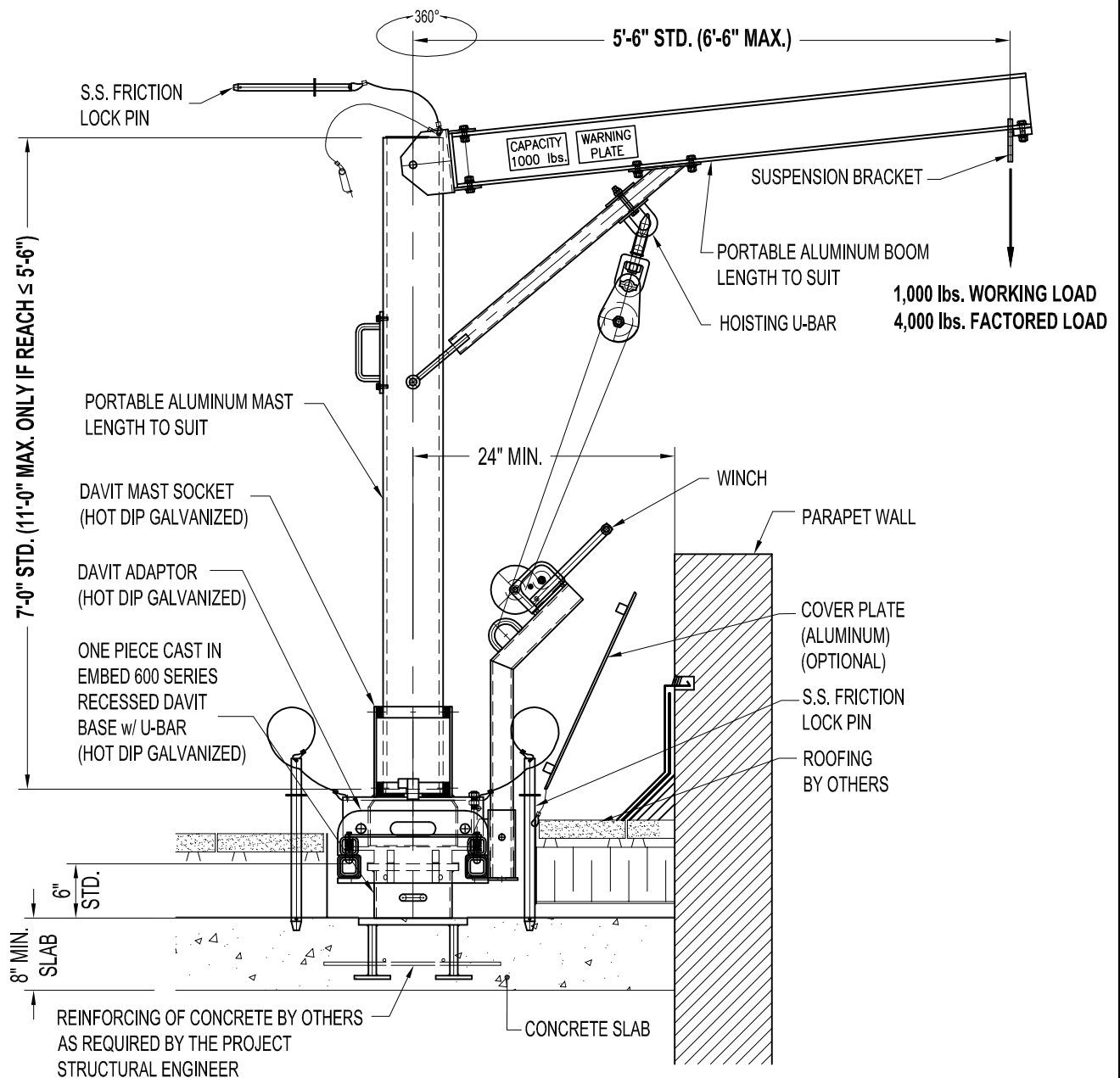
A-D6(U)R9-6S: DAVIT ASSEMBLY A100 ARM - SHORT SERIES w/ 600 RECESSED BASE (c/w U-BAR) - FULLY EMBEDDED

NOTES:

1. SYSTEM SHOWN BELOW IS FOR 1,000 lbs. WORKING LOAD.
2. ASSEMBLY SHOWN IS GROUND RIGGED DAVIT ARM TYPE A100 (TALL SERIES), ONE PIECE CAST IN EMBED 600 RECESSED DAVIT BASE w/ U-BAR, AND 200 SERIES ADAPTOR.

IMPORTANT:

1. DAVITS ARE DESIGNED TO A TYPICAL SUSPENSION LOAD OF 1,000 lbs. (4.5 KN), WITH A FACTOR OF SAFETY OF 4 AGAINST FRACTURE OR DETACHMENT.
2. IT IS THE RESPONSIBILITY OF THE STRUCTURAL ENGINEER FOR THE OVERALL PROJECT TO ENSURE THAT THE STRUCTURE ON WHICH THE SAFETY EQUIPMENT BY PRO-BEL IS INSTALLED, IS REINFORCED TO WITHSTAND THE LOADS INDICATED ON THIS DRAWING.



A-D16(U)R9-6T: DAVIT ASSEMBLY A100 ARM - TALL SERIES w/ 600 RECESSED BASE (c/w U-BAR) - FULLY EMBEDDED